



萬揚國際股份有限公司

CROSS BORDER CO.,LTD.

NO.336 YUHE RD., EAST DIST.,
TAINAN CITY, TAIWAN, R.O.C.
E-mail : cb8855@ms29.hinet.net
<http://www.cb8855.com.tw>

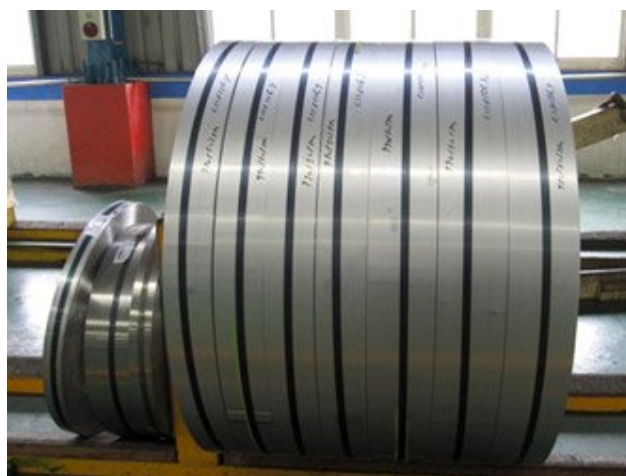
台南市東區裕和路 336 號
TEL: 886-6-2908855
FAX: 886-6-2688578

1、 Product & Services :

(1) Stainless steel coils :



(2) Stainless steel strips :



(3) Stainless steel sheets (4\'x8\') :



(4) Stainless steel customized sheared size :





萬揚國際股份有限公司 CROSS BORDER CO.,LTD.

NO.336 YUHE RD., EAST DIST.,
TAINAN CITY, TAIWAN, R.O.C.
E-mail : cb8855@ms29.hinet.net
<http://www.cb8855.com.tw>

台南市東區裕和路 336 號
TEL: 886-6-2908855
FAX: 886-6-2688578

2、 Main service items :

Prime stainless steel coils/sheets slitting/levelling/shearing/polishing, PE/PVC layer coating protection., etc

In-house coils/strips/sheets/plates processing :

A : Sheets-Cutting

B : Coil-slitting

C : Grinding

D : Protective Layer Coating (PE/PVC)

Cross Border is well-facilitated with machining equipments, including cutting shearing to surface treatment, surface protection on both coils and sheets.

3、 Cross Border main supply of stainless steel grades :

AISI	UNS	G8/China	EN(Din)	ASTM
201	S20100	1Cr17Mn6Ni5N	1.4372	A240
301	S30100	1Cr17Ni7	1.4310	A240
304	S30400	0Cr18Ni9	1.4301	A240
304L	S30403	00Cr19Ni10	1.4307	A240
316	S31600	0Cr17Ni12Mo2	1.4401	A240
316L	S31603	7Ni14Mo2	1.4404	A240
430	S43000	1Cr17	1.4016	A240



萬揚國際股份有限公司

CROSS BORDER CO.,LTD.

NO.336 YUHE RD., EAST DIST.,
TAINAN CITY, TAIWAN, R.O.C.
E-mail : cb8855@ms29.hinet.net
<http://www.cb8855.com.tw>

台南市東區裕和路 336 號
TEL: 886-6-2908855
FAX: 886-6-2688578

4、 Applications of Cross Border range of products :

- *Automobile parts
- *Watch parts
- *House Utensils
- *Medical instruments
- *Stoves
- *PC parts
- *Chemical/Petro-chemical
- *Construction&Decoration
- *Kitchenware/cookware
- *Pipes/Tubes

5、 Special tension leveled/tempered super thin stainless steel :

CSP (Special tension leveled/tempered super thin stainless steel)

In the recent years we are striving to develop CSP super thin with high tensile strength coils/sheets at specified hardness such as 1/2H,3/4H &FH to extra Hard and is capable of reaching 0.04mm super thin plate.With the cutting-edge metal treatment technique of the mills,we have entered the high-end applications such as engine gasket,hard disc drive,LCD frame,computer fittings,cellular phone case,precision stamping parts,medical instruments.,etc.

Our strategic alliance with the mills enables us to adjust manufacturing conditions for each product according to its application and processing by different heat treatment methods.



萬揚國際股份有限公司

CROSS BORDER CO.,LTD.

NO.336 YUHE RD., EAST DIST.,
TAINAN CITY, TAIWAN, R.O.C.
E-mail : cb8855@ms29.hinet.net
<http://www.cb8855.com.tw>

台南市東區裕和路 336 號
TEL: 886-6-2908855
FAX: 886-6-2688578

Typical Mechanical properties tempered SUS304 and SUS301

Grade	Temper Condition	Hardness (HV)	Tensile Strength N/mm ² (MPa)	Yield Strength N/mm ² (MPa)	Elongation N/mm ² %
SUS 304	ANN	200 max	205 min	520 min	40 min
	1/2H	250 min	470 min	780 min	6 min
	3/4H	310 min	665 min	930 min	3 min
	FH	370 min	880 min	1130 min	-
SUS 301	ANN	200 max	205 min	520 min	40 min
	1/2H	310 min	510 min	930 min	10 min
	3/4H	370 min	745 min	1130 min	5 min
	FH	430 min	1030 min	1320 min	3 min
	EH	490 min	1275 min	1570 min	-

Dimension Tolerances of Thickness

寬度 Width	JIS4305 (ET)				ASTM A480M				GB/T 4239				萬揚 CROSS BORDER			
	< 250	≥ 160 < 250	≥ 250 < 400	≥ 400 < 600	> 5 ≤ 25	> 25 ≤ 76	> 76 ≤ 150	> 150 ≤ 300	> 20 ≤ 150	> 150 ≤ 250	> 250 ≤ 400	> 400 ≤ 600	> 10 < 150	> 250 ≤ 400	> 400 ≤ 600	
厚度 Thickness	< 0.10	± 0.010	± 0.020	—	—	± 10%	± 10%	= 10%	± 10%	± 0.010	± 0.010	± 0.010	—	± 0.005	= 0.010	± 0.010
Ⅲ 0.10 ~ 0.16	± 0.015	± 0.020	—	—	± 10%	± 10%	= 10%	± 10%	± 0.010	± 0.010	± 0.010	—	± 0.010	= 0.010	± 0.010	
Ⅲ 0.16 ~ 0.25	± 0.020	± 0.025	±	±	± 4%	± 4%	± 4%	± 4%	± 0.010	± 0.010	± 0.010	—	± 0.010	± 0.010	± 0.010	
Ⅲ 0.25 ~ 0.40	± 0.025	± 0.030	±	±	± 5%	± 5%	± 5%	± 6%	± 0.020	± 0.020	± 0.020	± 0.020	+ 0.010 - 0.015	± 0.020	± 0.015	
Ⅲ 0.40 ~ 0.60	± 0.035	± 0.040	±	±	± 6%	± 6%	± 6%	± 6%	± 0.020	± 0.020	± 0.020	± 0.030	± 0.015	± 0.020	± 0.020	
Ⅲ 0.60 ~ 0.80	± 0.040	± 0.045	±	±	± 6%	± 6%	± 6%	± 9%	± 0.030	± 0.030	± 0.030	± 0.040	+ 0.015 - 0.020	± 0.030	± 0.025	
Unit = mm																



萬揚國際股份有限公司

CROSS BORDER CO.,LTD.

NO.336 YUHE RD., EAST DIST.,
TAINAN CITY, TAIWAN, R.O.C.
E-mail : cb8855@ms29.hinet.net
<http://www.cb8855.com.tw>

台南市東區裕和路 336 號
TEL: 886-6-2908855
FAX: 886-6-2688578

Dimensional Tolerances of Width

Thickness \ Width	JIS 4305 (EW)		ASTM A480M		GB/T 4239		CROSS BORDER CO.,LTD		
	< 0.60	0.60 ~1.00	< 0.60	0.60~ 1.00	< 0.60	0.60~ 1.00	>0.03/ <0.15	>0.15/ <0.50	>0.50/ <1.00
< 10	-	-	-	-	-	-	-	-	-
10~80	± 0.15	± 0.20	± 0.127	± 0.127	± 0.15	± 0.20	± 0.10	± 0.15	± 0.20
80~160	± 0.15	± 0.20	± 0.127	± 0.127	± 0.20	± 0.25	± 0.10	± 0.15	± 0.20
160~260	± 0.20	± 0.25	± 0.254	± 0.254	± 0.20	± 0.25	± 0.10	± 0.15	± 0.20
260~400	± 0.25	± 0.25	± 0.254	± 0.254	± 0.25	± 0.30	± 0.10	± 0.15	± 0.20
400~600	± 0.30	± 0.30	± 0.406	± 0.406	± 0.30	± 0.30	± 0.10	± 0.15	± 0.20

Unit = mm

*CPS Applications

Engine Gasket



Textile Reed





萬揚國際股份有限公司 CROSS BORDER CO.,LTD.

NO.336 YUHE RD., EAST DIST.,
TAINAN CITY, TAIWAN, R.O.C.
E-mail : cb8855@ms29.hinet.net
<http://www.cb8855.com.tw>

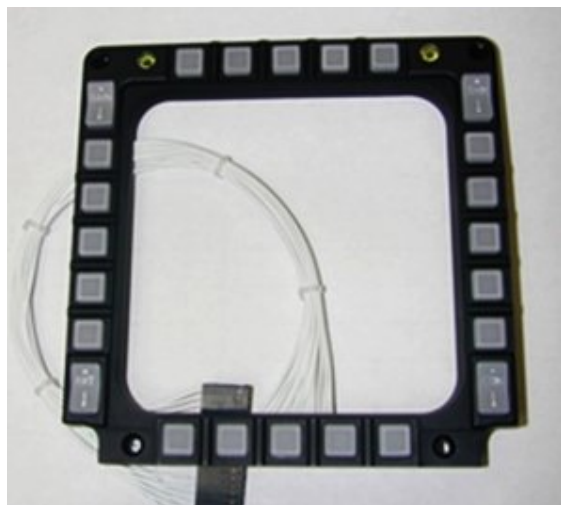
台南市東區裕和路 336 號
TEL: 886-6-2908855
FAX: 886-6-2688578

*CPS Applications

Flexible Hose



1 Photo Etching



Ear Clamps



2 Photo Etching

